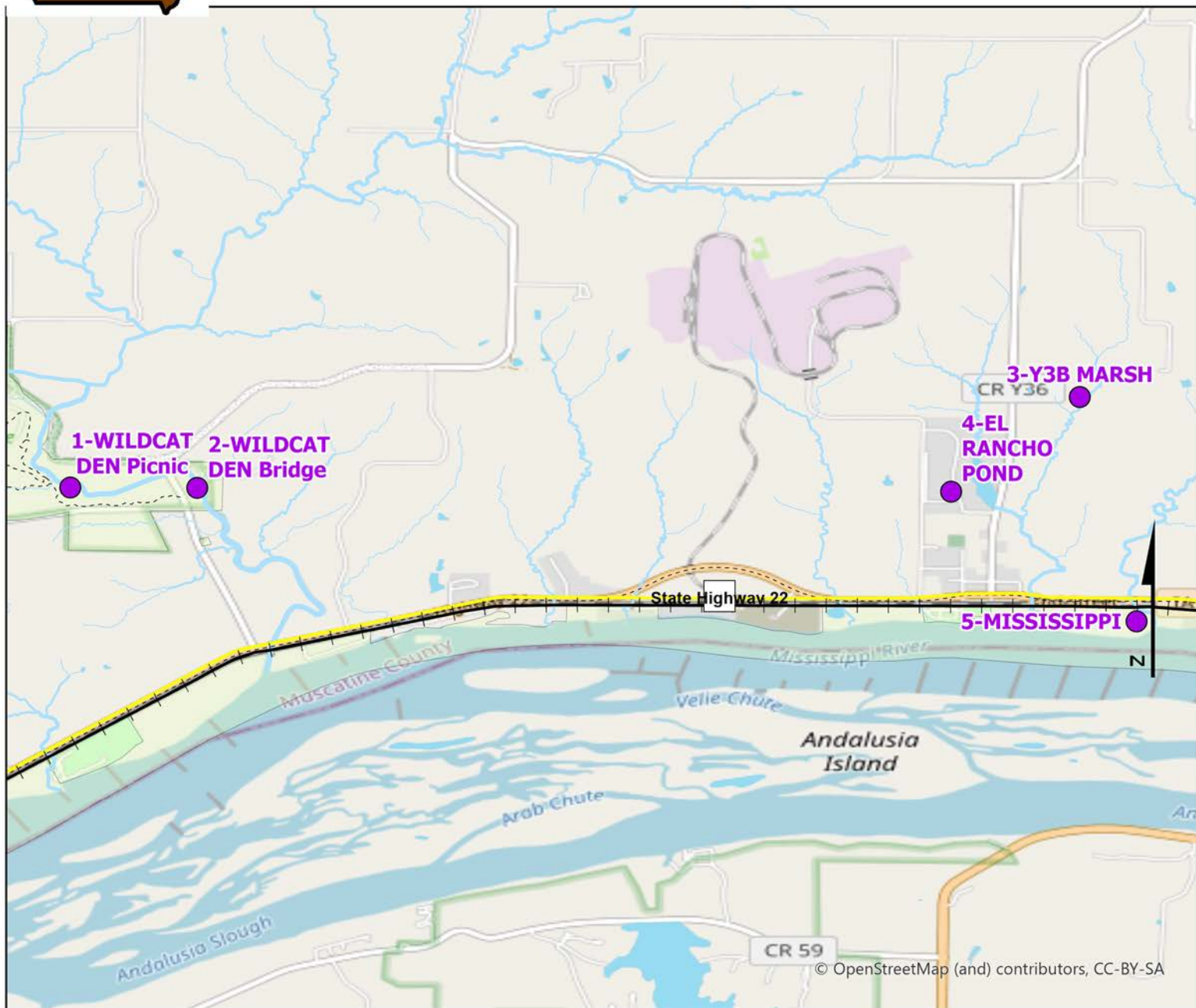
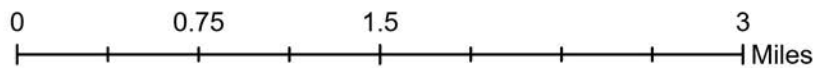


# Volunteer Wildlife Monitoring Program (VWMP) Frog and Toad Survey

Route ID: 150 County: Muscatine



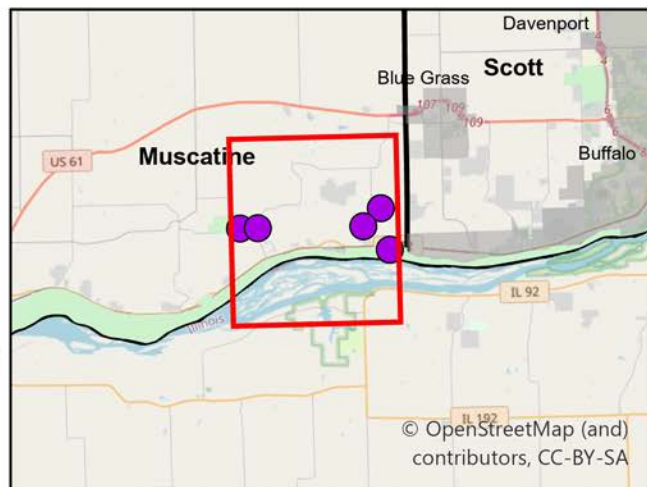
© OpenStreetMap (and) contributors, CC-BY-SA



## Legend

----- Trails

● Survey Stops

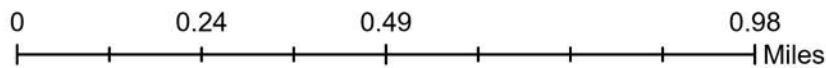
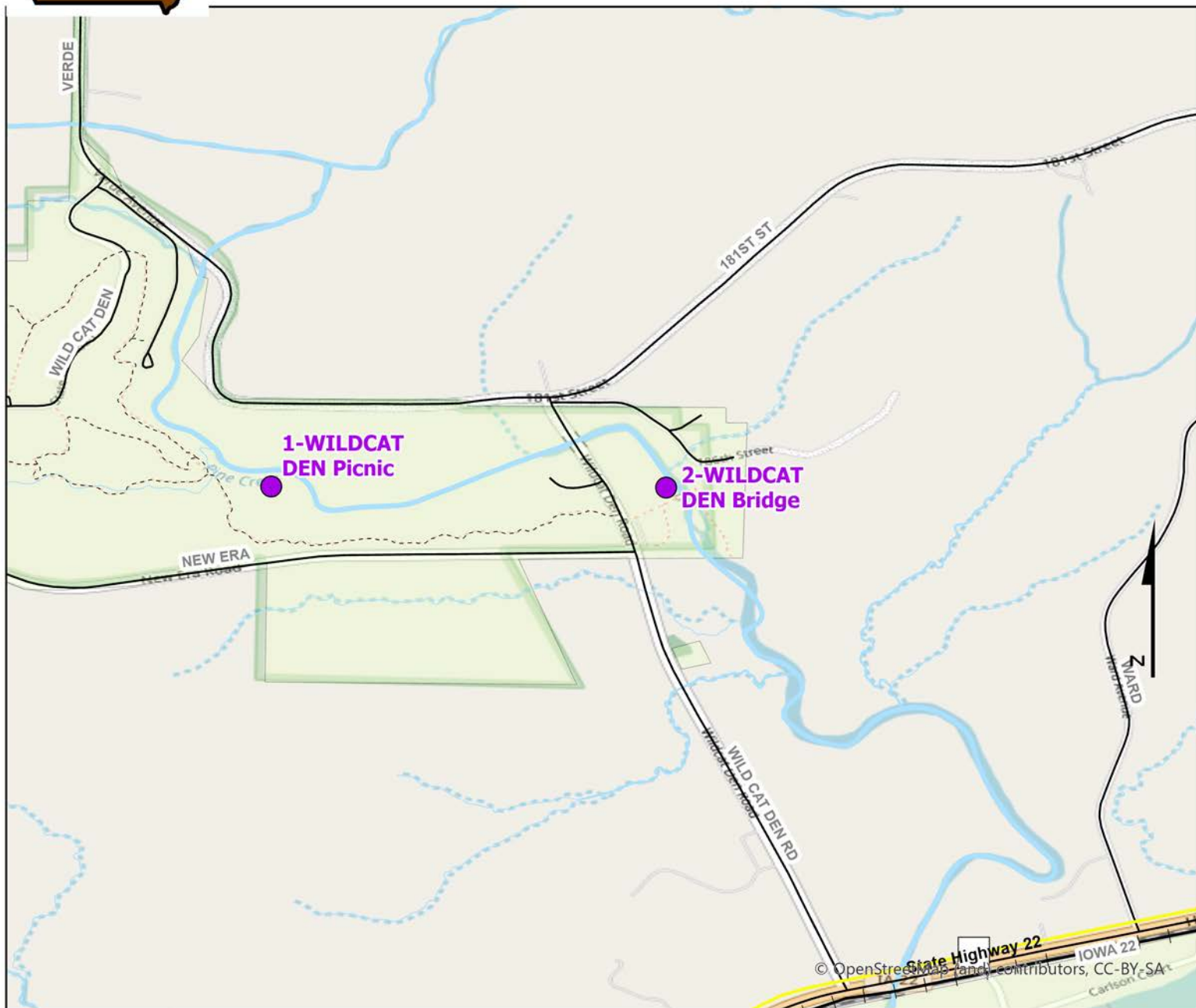


© OpenStreetMap (and) contributors, CC-BY-SA

# Volunteer Wildlife Monitoring Program (VWMP) Frog and Toad Survey



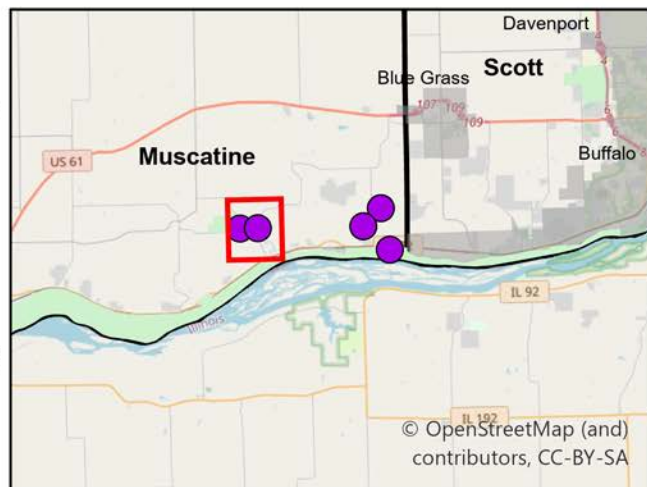
Route ID: 150 County: Muscatine



## Legend

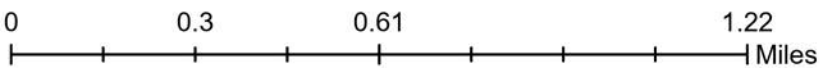
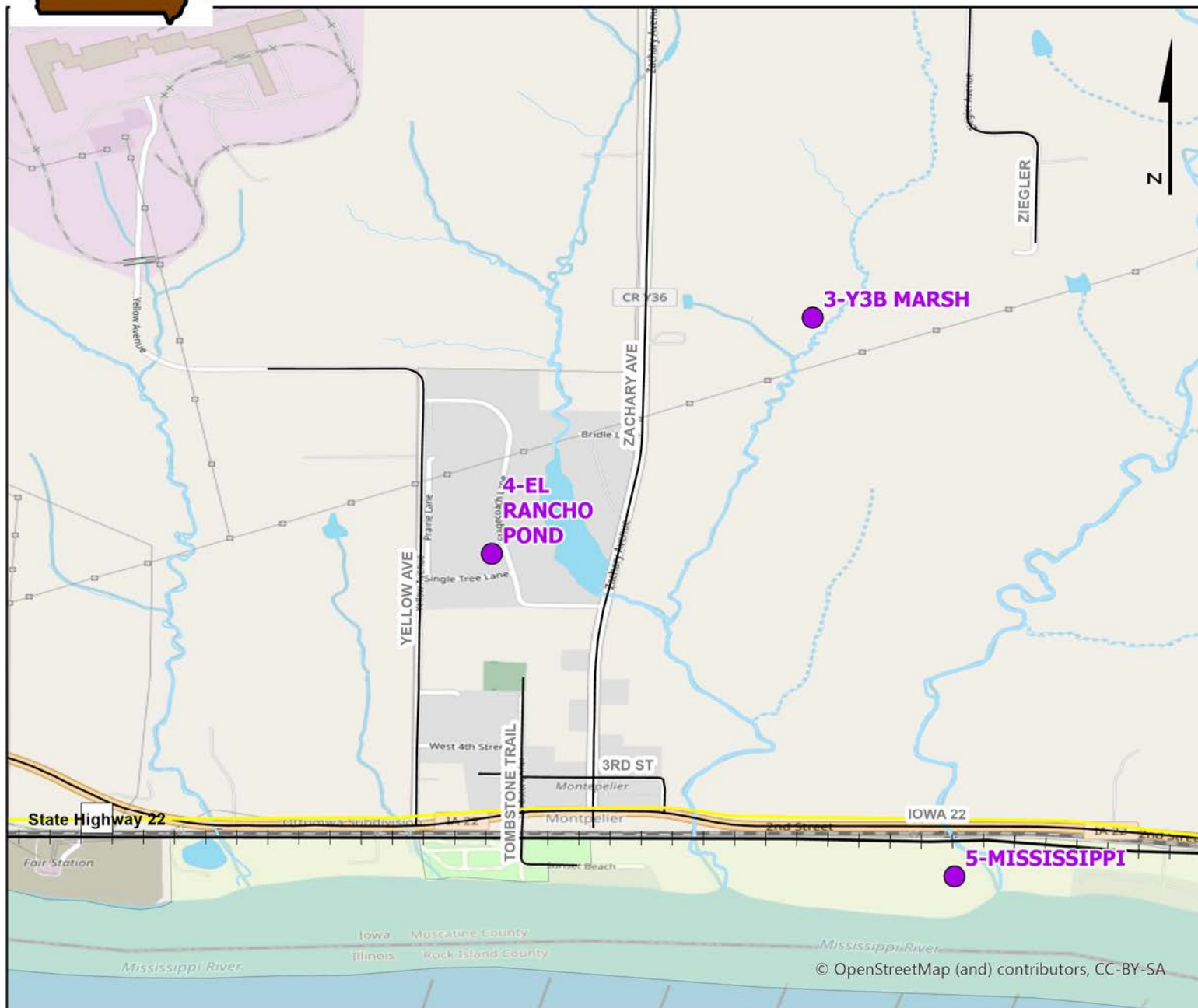
----- Trails

● Survey Stops



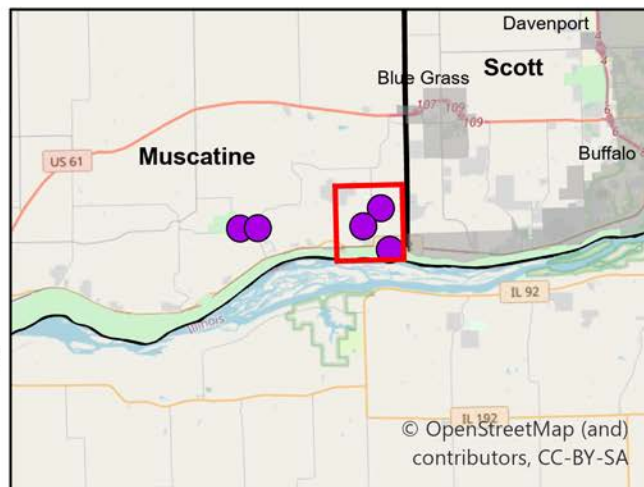
# Volunteer Wildlife Monitoring Program (VWMP) Frog and Toad Survey

Route ID: 150 County: Muscatine



## Legend

- Trails
- Survey Stops





# Frog and Toad Call Survey Route Description

Route ID:

Established:

Site Number	Name	County	Latitude	Longitude	Directions
<input type="text" value="1"/>	<input type="text" value="WILDCAT DEN Picnic"/>	<input type="text" value="Muscatine"/>	<input type="text" value="41.467673"/>	<input type="text" value="-90.877651"/>	<input type="text" value="Picnic Area in Wildcat Den"/>
<input type="text" value="2"/>	<input type="text" value="WILDCAT DEN Bridge"/>	<input type="text" value="Muscatine"/>	<input type="text" value="41.4676457"/>	<input type="text" value="-90.8678987"/>	<input type="text" value="Parking area on east side of Wildcat Den Rd, bridge is just on the other side Mill shelter"/>
<input type="text" value="3"/>	<input type="text" value="Y3B MARSH"/>	<input type="text" value="Muscatine"/>	<input type="text" value="41.4746182"/>	<input type="text" value="-90.8000796"/>	
<input type="text" value="4"/>	<input type="text" value="EL RANCHO POND"/>	<input type="text" value="Muscatine"/>	<input type="text" value="41.4673517"/>	<input type="text" value="-90.8099647"/>	<input type="text" value="Pond off of Stagecoach Ln in Montpelier"/>
<input type="text" value="5"/>	<input type="text" value="MISSISSIPPI"/>	<input type="text" value="Muscatine"/>	<input type="text" value="41.4573994"/>	<input type="text" value="-90.7957142"/>	